



**AUTOMATIZACIÓN
Y CONTROL**





-
- LOGO
 - MEANING
 - COMPANY'S DEFINITION
 - MISSION
 - VISION
 - USE OF TECHNOLOGY AND SCOPE OF PROJECTS
 - PROJECTION AND CURRENT PROJECTS



LOGO



MEANING

Automatización y Control (Automation and Control) refers to the integration of advanced technologies applied to the use of computerized systems and electromechanical elements or to control machines and /or industrial processes.

The logo represents the top of the mountain, place where we not only want to reach but more importantly, remain.



COMPANY'S DEFINITION

A&C is a Company dedicated to the design, development and integration of flexible manufacturing cells using cutting edge technologies oriented to process control and industrial automation.

MISSION

A&C's mission is establishing itself as a leader in the field of automation in the national market by merging innovation, high technology and low cost.





VISION

A&C's vision is establishing itself as a leader in the field of automation at international level, committed to the high quality of our services and products.





USE OF TECHNOLOGY

PROCESS AUTOMATION

- US, HS, HACS Welding
- IR Welding
- Vision System
- Automatic Assemblies
- Process Control
- Traceability
- Poka-Yoke
- Pneumatics
- Electronics
- IT

MOTION CONTROL

- 6 Axis Robot
- Pick & Place Robots
- Cartesian Robots (Gantry Robots)
- Servomotor
- Frequency Variators
- Stepper Motors





OUR SERVICES

ENGINEERING SERVICES

- Design and Development of Automatic Control Systems.
- Manufacture of Industrial Control Cabinets.
- PLC's Programming Services (Programmable Logic Controller), HMI's Programming (Human-Machine Interface) and Programming/Integration of Peripheral Electronic Devices.
- Advice and Training on Program Design and Development of Automatic Control Systems.
- Repair and Maintenance of Automated Systems.
- Design of Flexible Manufacturing Cells.





MAIN
CLIENTS





COMPANY

A&C: ASSEMBLY WORKSHOP (1000 mts² / 10,700 ft²)

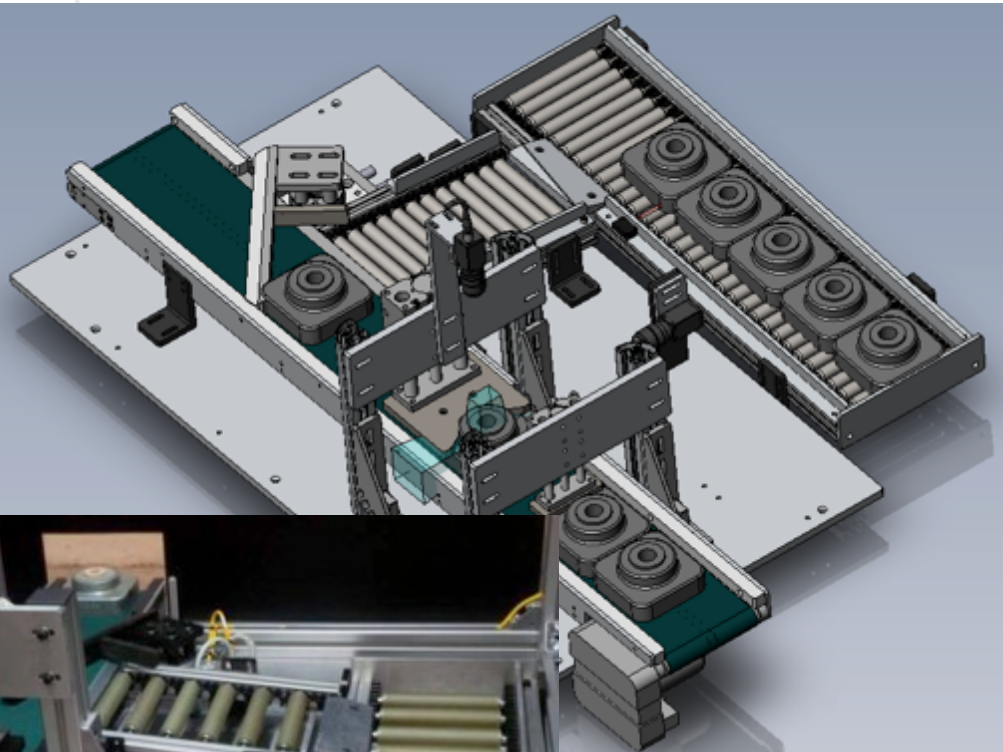
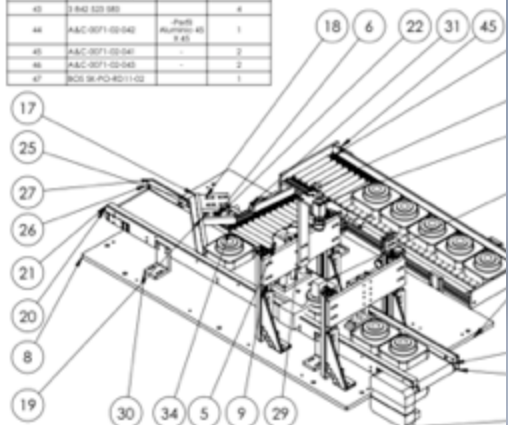




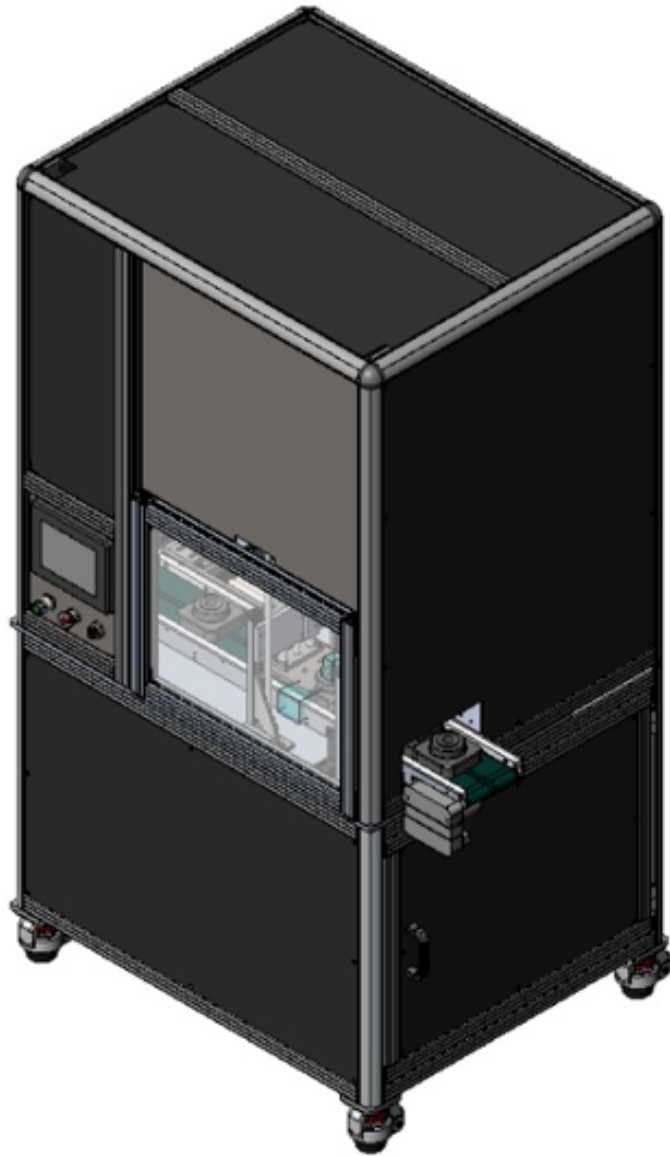
PROJECTS

VISION SYSTEMS

N° DE ELEMENTO	N° DE PEZA	DESCRIPCION	CANTIDAD	N° DE ELEMENTO	N° DE PEZA	DESCRIPCION	CANTIDAD
1	Vesuvius	AAK-70000	1	38	AAC-0271-02-026	-	1
2	CY-4000M-CA-1403	-	1	39	AAC-0271-02-028	-	1
3	CY-200M-A-1403	-	1	40	COG-0025-100	-	1
4	SALUF 800 H0000	-	2	41	AAC-0271-02-028	-	1
5	POS-18-BAU-02-023	-	1	42	AAC-0271-02-040	-	1
6	HGFN40-30A	-	1	43	3 BA3 523 383	-	4
7	HGFN20A	-	1	44	AAC-0271-02-042	Parte Aluminio 45	1
8	3459-100-1000-20-1000000000000	-	1	45	AAC-0271-02-046	-	1
9	AAC-0271-02-051	-	1	46	AAC-0271-02-043	-	2
10	AAC-0271-02-052	-	1	47	POS 9K-PO-0211-02	-	1
11	AAC-0271-02-053	-	1				
12	AAC-0271-02-054	-	2				
13	AAC-0271-02-057	-	1				
14	AAC-0271-02-058	-	1				
15	AAC-0271-02-059	-	1				
16	AAC-0271-02-061	-	1				
17	AAC-0271-02-064	-	1				
18	AAC-0271-02-013	-	1				
19	AAC-0271-02-014	-	1				
20	AAC-0271-02-018	-	1				
21	AAC-0271-02-019	-	1				
22	AAC-0271-02-020	Barra de Alu 10" X 1/2"	1				
23	AAC-0271-02-021	Barra de Alu 10" X 1/2"	1				
24	AAC-0271-02-022	Barra de Alu 10" X 1/2"	1				
25	AAC-0271-02-023	Barra de Alu 10" X 1/2"	1				
26	AAC-0271-02-024	Barra de Alu 10" X 1/2"	1				
27	AAC-0271-02-025	-	1				
28	AAC-0271-02-026	Barra de Alu 10" X 1/2"	1				
29	AAC-0271-02-027	-	4				
30	AAC-0271-02-028	-	2				
31	AAC-0271-02-029	-	2				
32	AAC-0271-02-029	-	2				
33	AAC-0271-02-029	-	2				
34	AAC-0271-02-029	-	1				
35	HGFN20-30	-	1				
36	AAC-0271-02-053	Parte Aluminio 45 X 40	2				
37	AAC-0271-02-037	Parte Aluminio 45 X 40	2				



VESUVIUS: Nozzle Identification Vision System Station

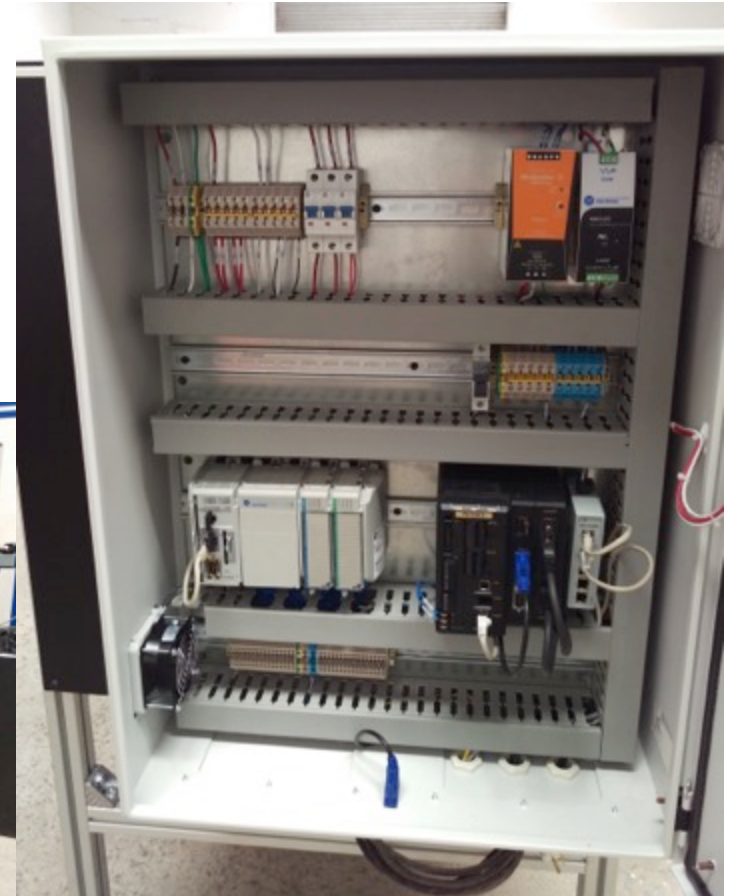


VESUVIUS: Nozzle Identification Vision System Station



PROJECTS

VISION SYSTEMS

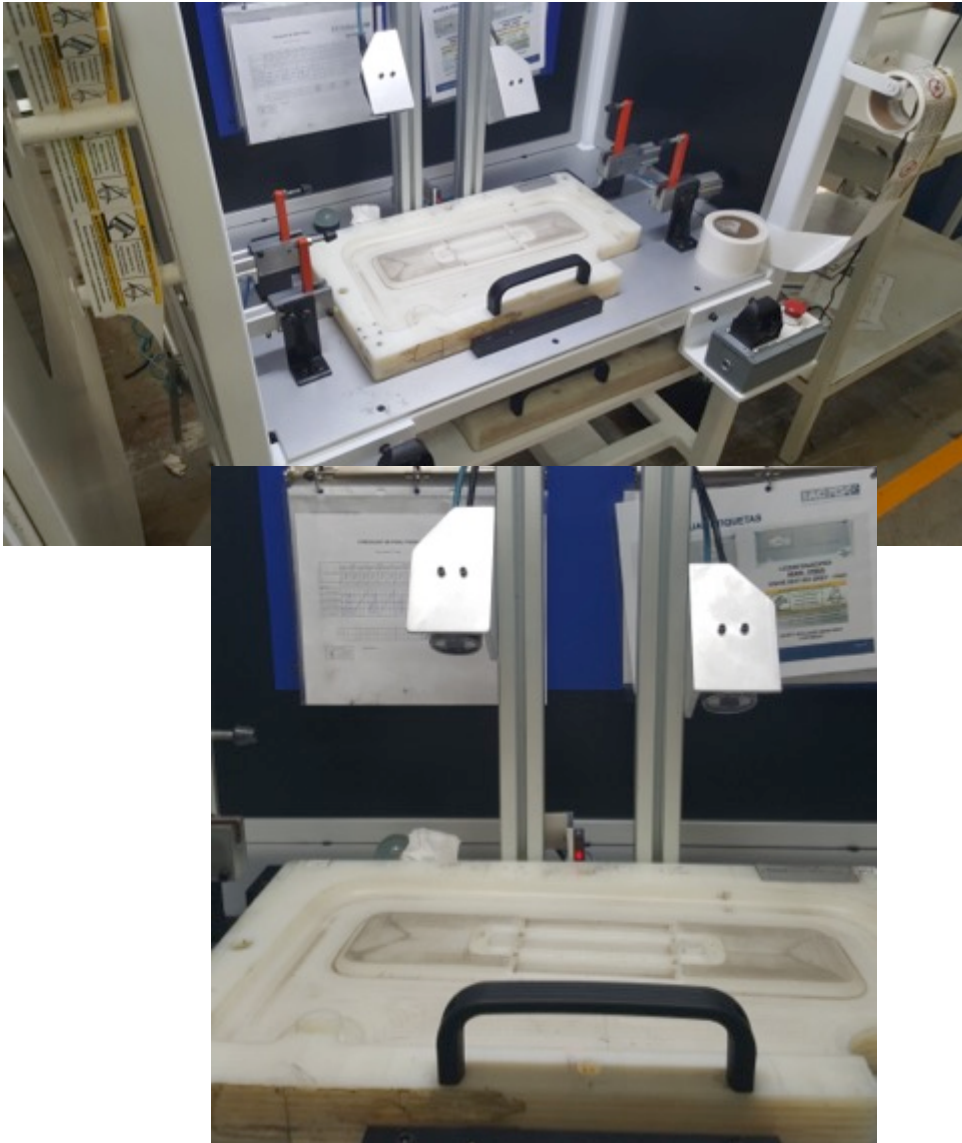


EATON: Lamp Housing Vision Station with Rejection

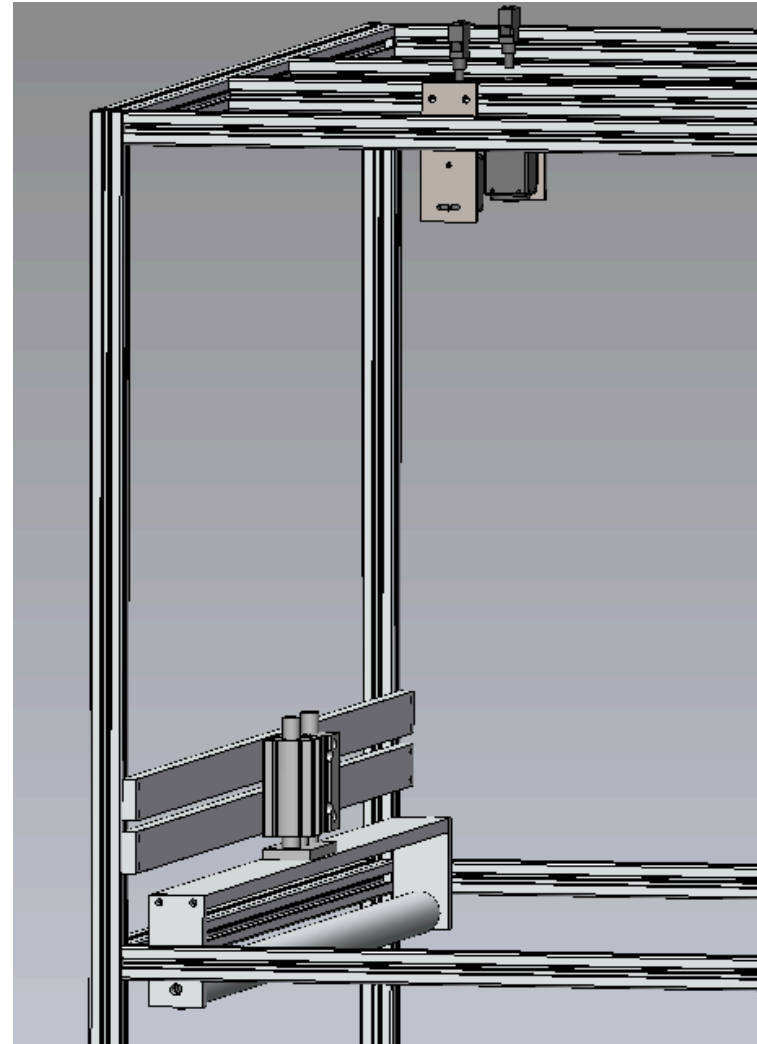
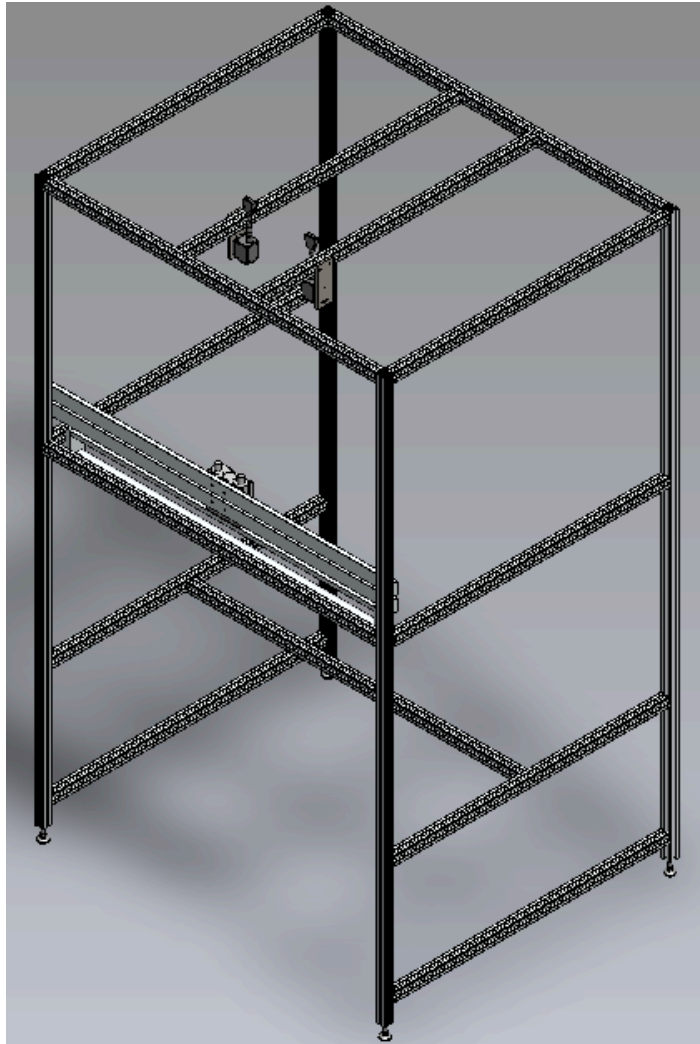


PROJECTS

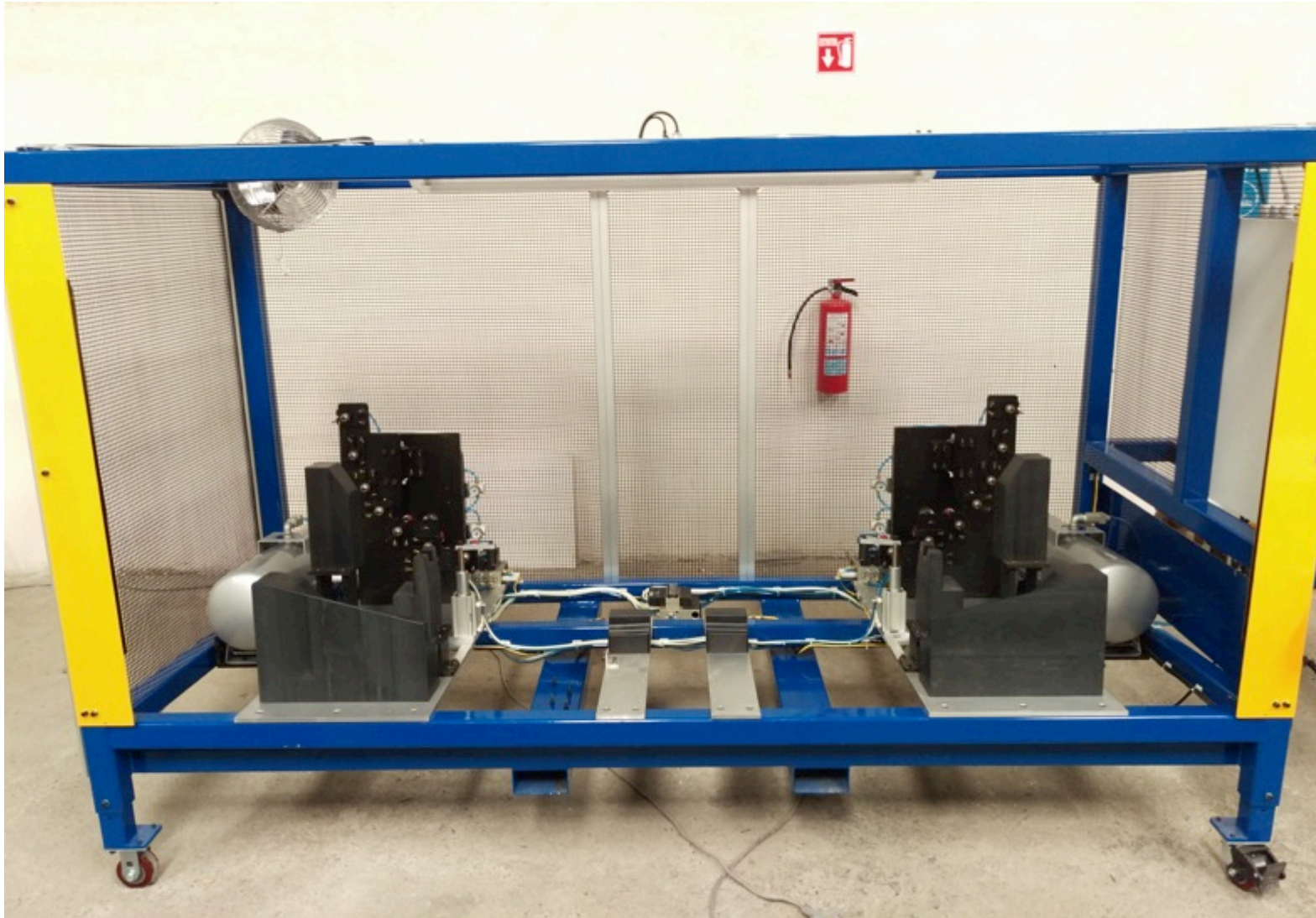
VISION SYSTEMS



IACNA: Sunvisor Labels Vision Sensor Station



NISSEI: Gauge Panel Vision Station with Rejection



CONMET: Lock Carrier Torque & Vision Station



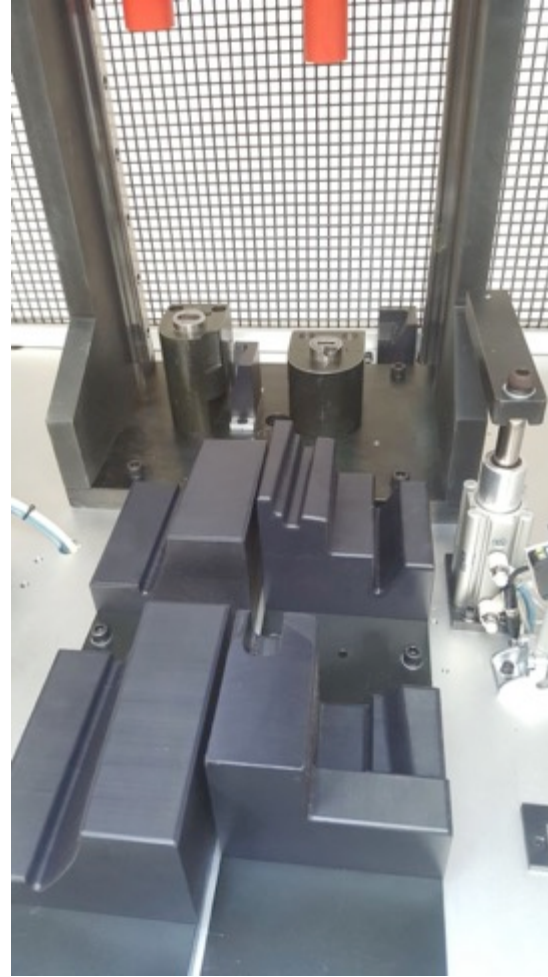
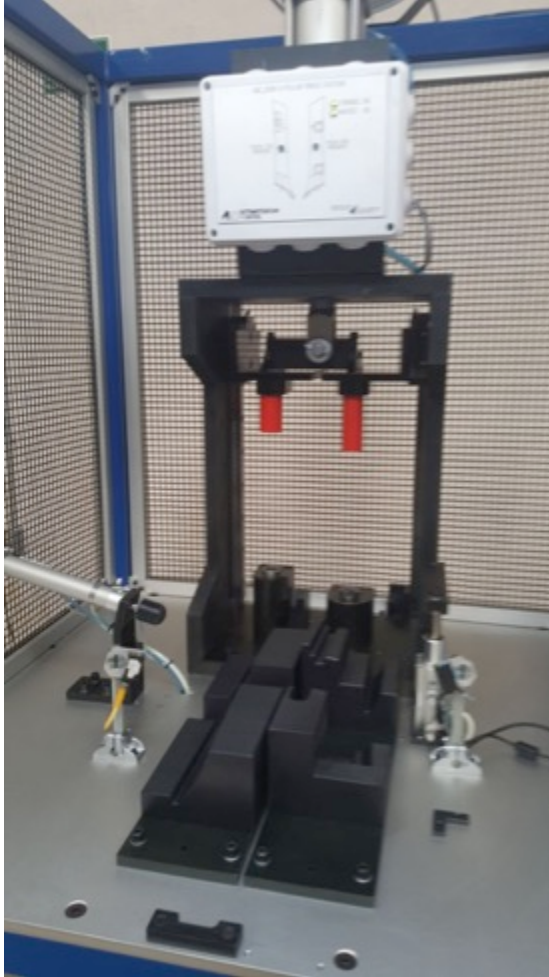
PROJECTS

CUTTING & PUNCH PRESS STATIONS



CONMET: Aero Bumper Drilling Station

CUTTING & PUNCH PRESS STATIONS



CONMET: Lock Carrier Torque & Vision Station

CUTTING & PUNCH PRESS STATIONS



CONMET: Lock Carrier Torque & Vision Station



PROJECTS

CUTTING & PUNCH PRESS STATIONS



IACNA: Fabric Cutting Station



PROJECTS

CUTTING & PUNCH PRESS STATIONS



CONMET: Lock Carrier Torque & Vision Station



PROJECTS

CUTTING & PUNCH PRESS STATIONS



IACNA: Personal Lamp Punch Press



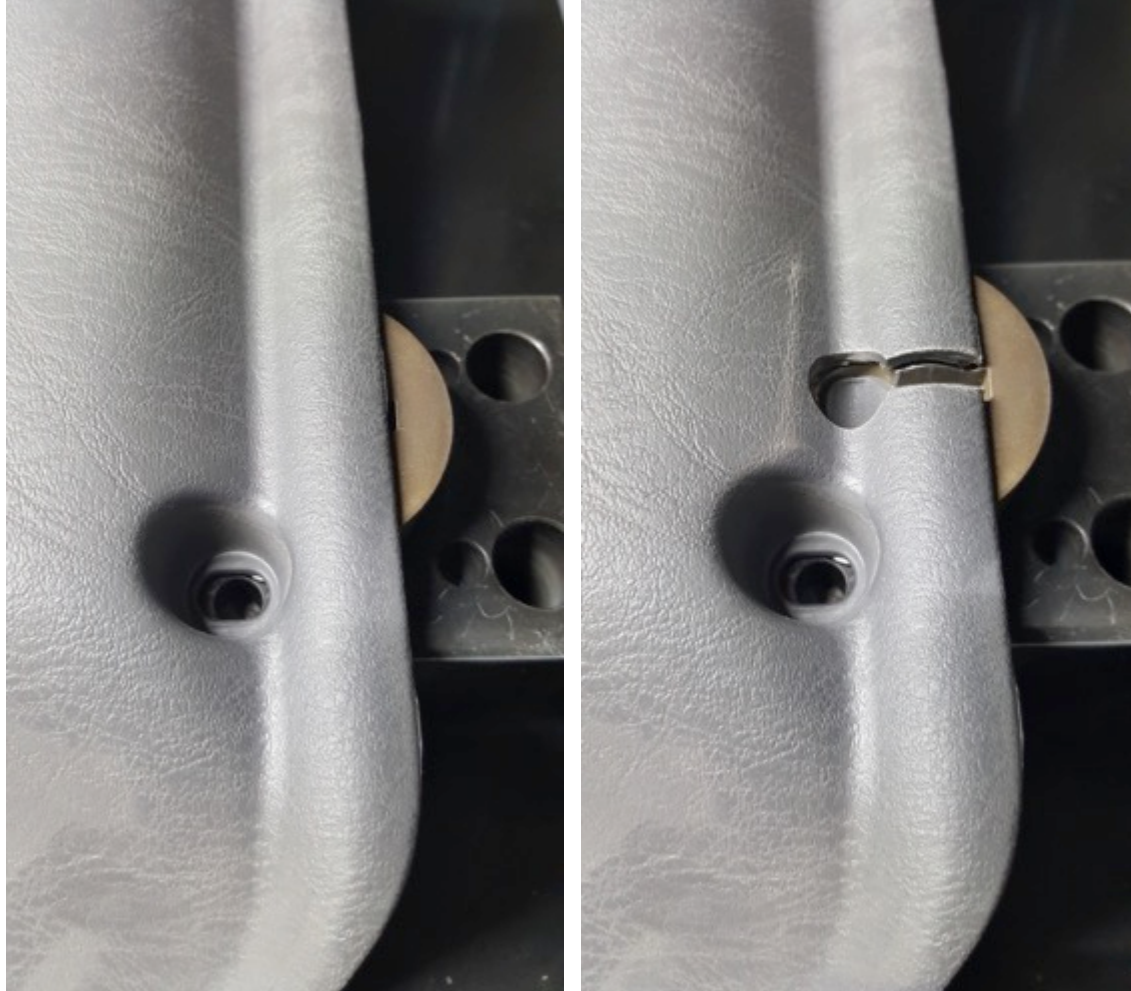
PROJECTS

CUTTING & PUNCH PRESS STATIONS



CONMET: OHC Punch Press

CUTTING & PUNCH PRESS STATIONS



CONMET: OHC Punch Press



PROJECTS

CUTTING & PUNCH PRESS STATIONS



IACNA: Fabric Cutting Station



PROJECTS

MOTION & ROBOTIC STATIONS

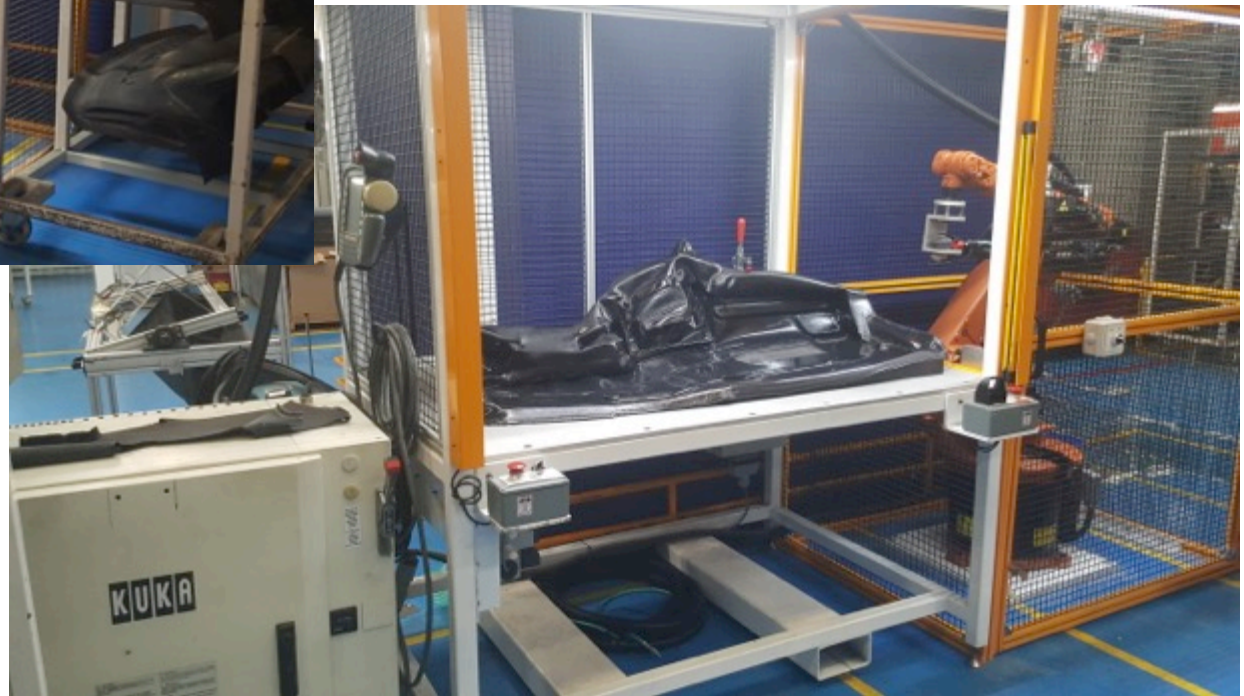
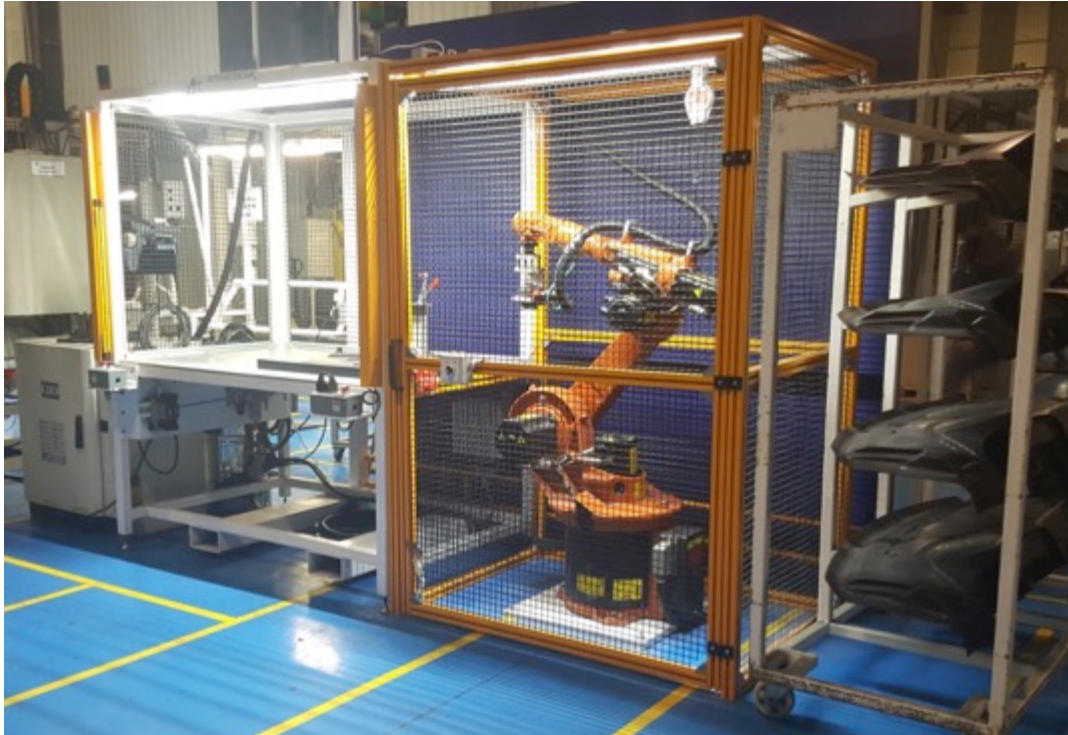


IACNA: External Foam Station



PROJECTS

MOTION & ROBOTIC STATIONS



GRUPO ANTOLIN: IP Sander Station



PROJECTS

MOTION & ROBOTIC STATIONS

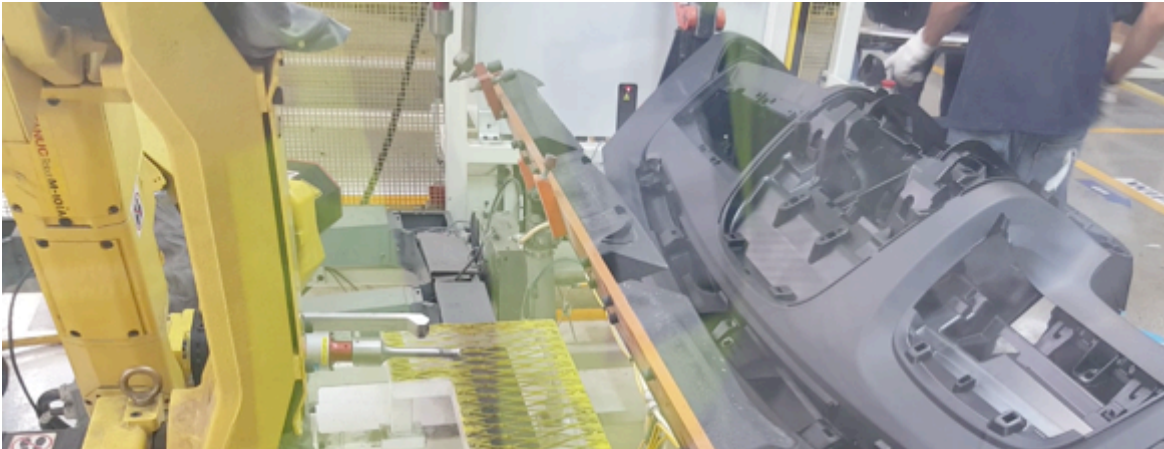


IACNA: Ionized Blow Robotic Station



PROJECTS

MOTION & ROBOTIC STATIONS



IACNA: Welding Robotic Station

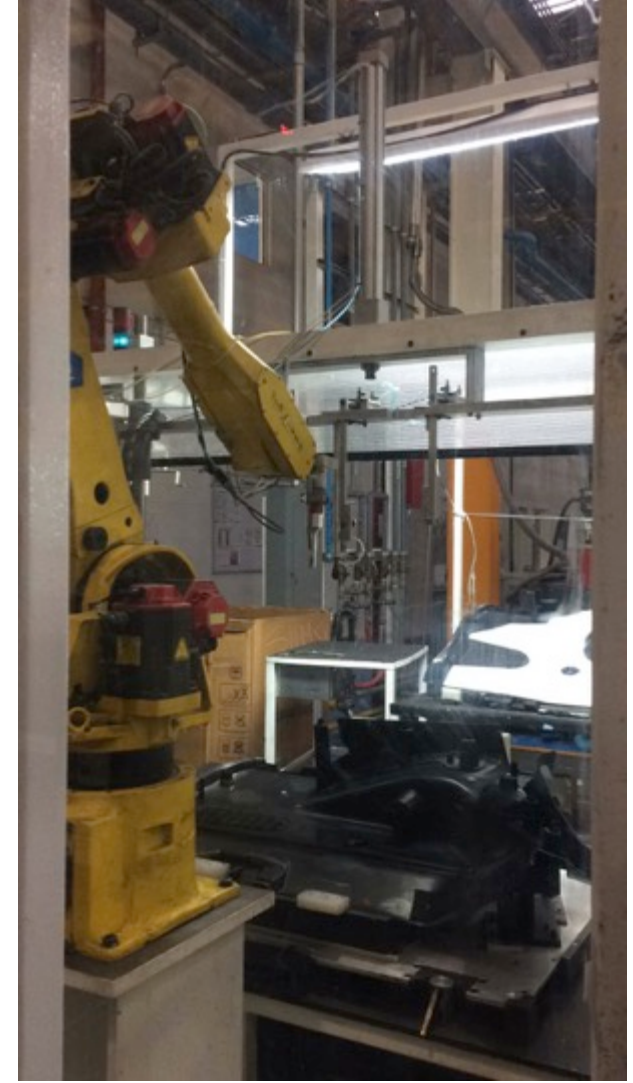


IACNA: Clipping Robotic Station

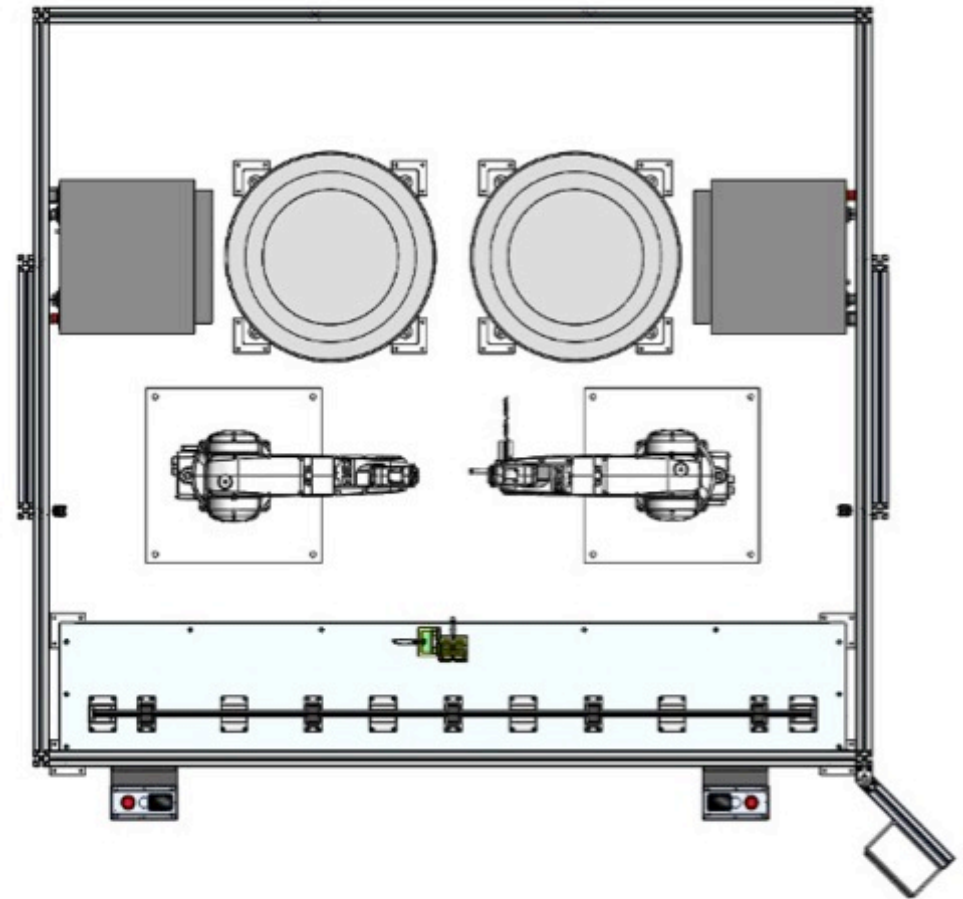
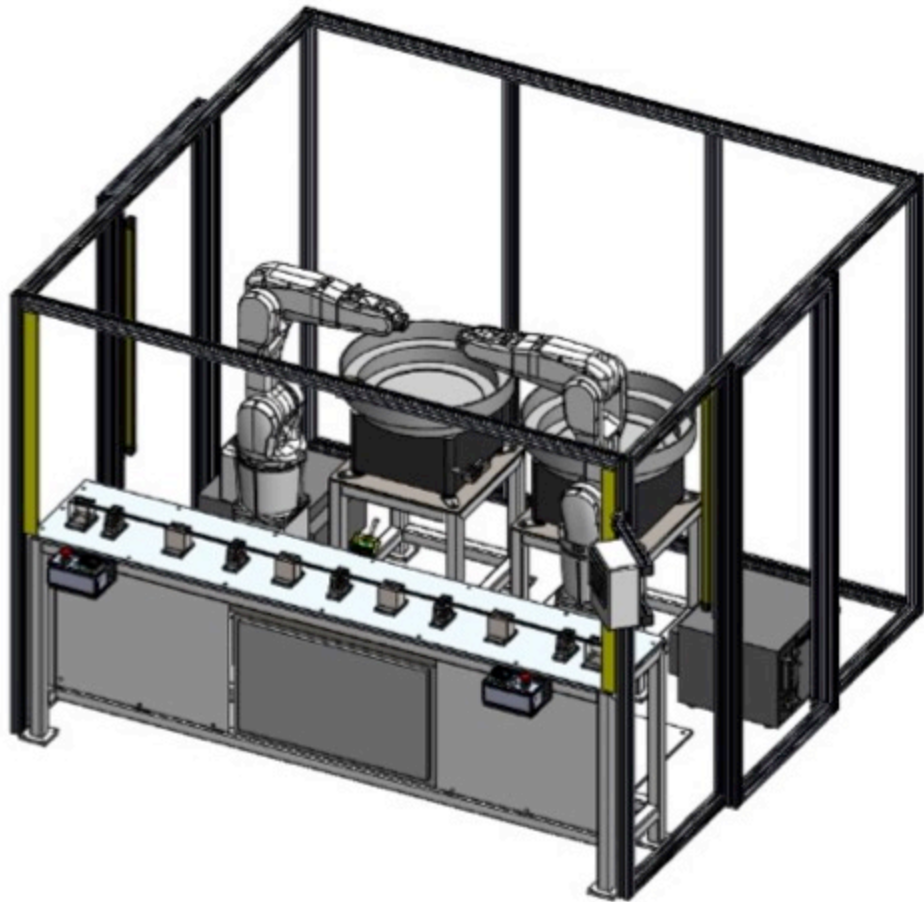


PROJECTS

MOTION & ROBOTIC STATIONS



MAGNA: Quarter Reinforcement Welding Station



MAGNA: Frt/Rear Door Assembly Station

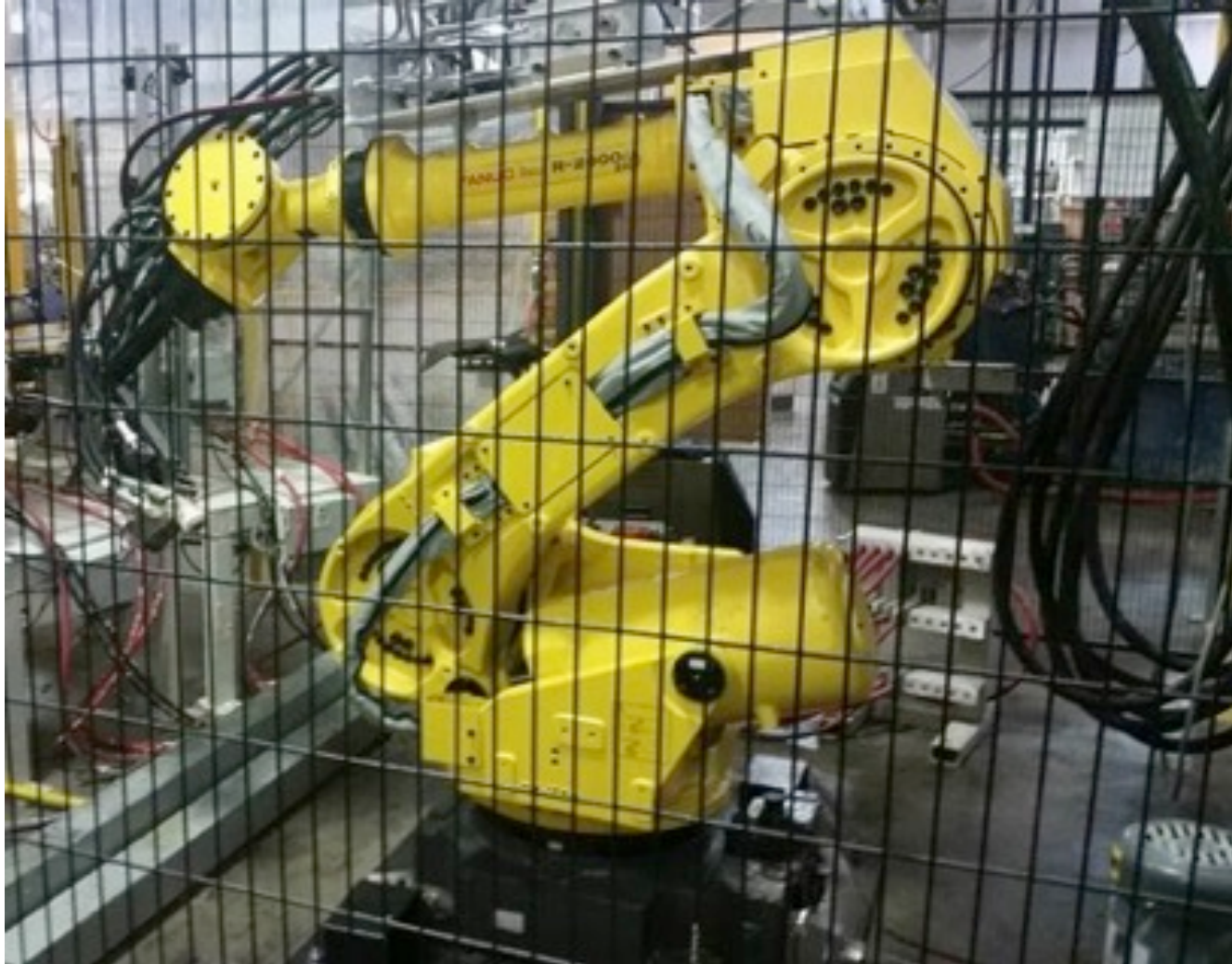


PROJECTS

MOTION & ROBOTIC STATIONS



MAGNA: Frt/Rear Door Assembly Station

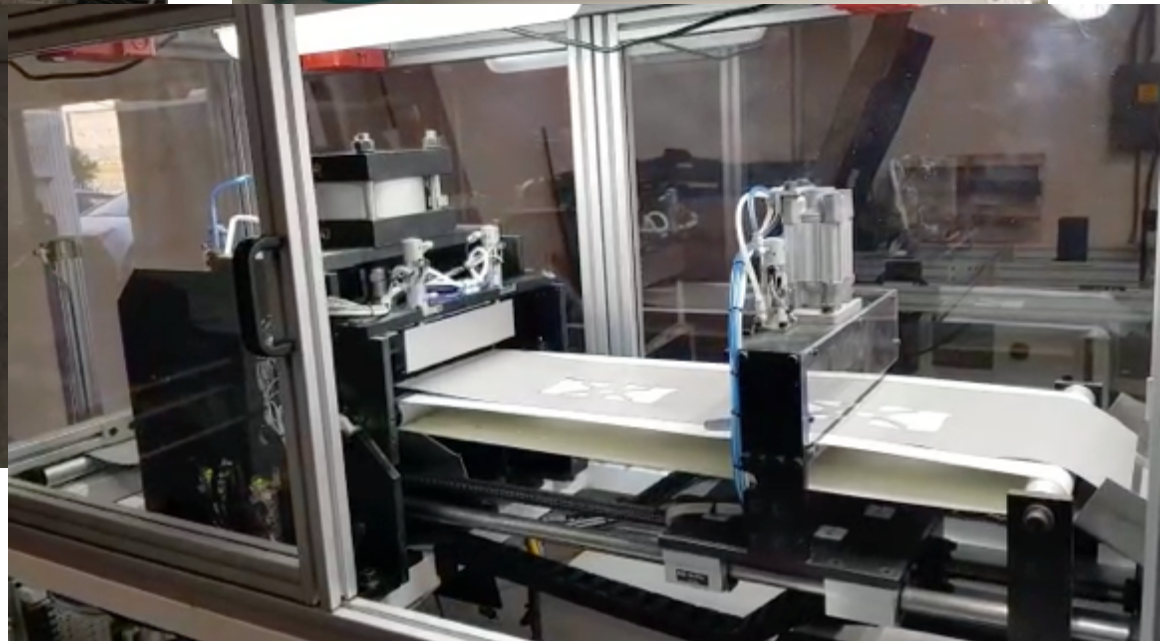


IACNA: Robotic Foam Station



PROJECTS

MOTION & ROBOTIC STATIONS

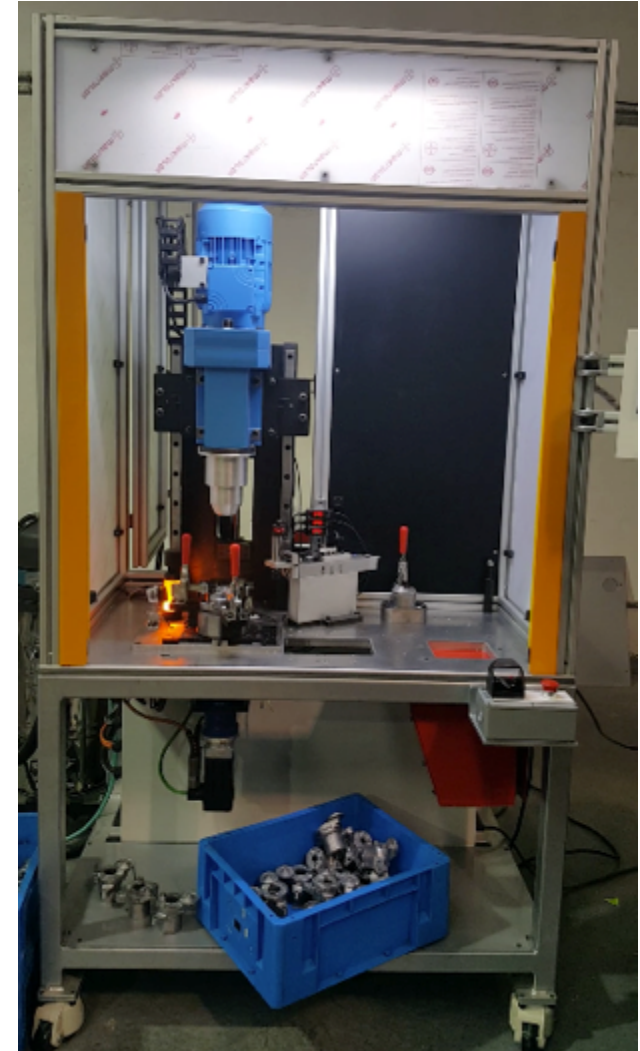
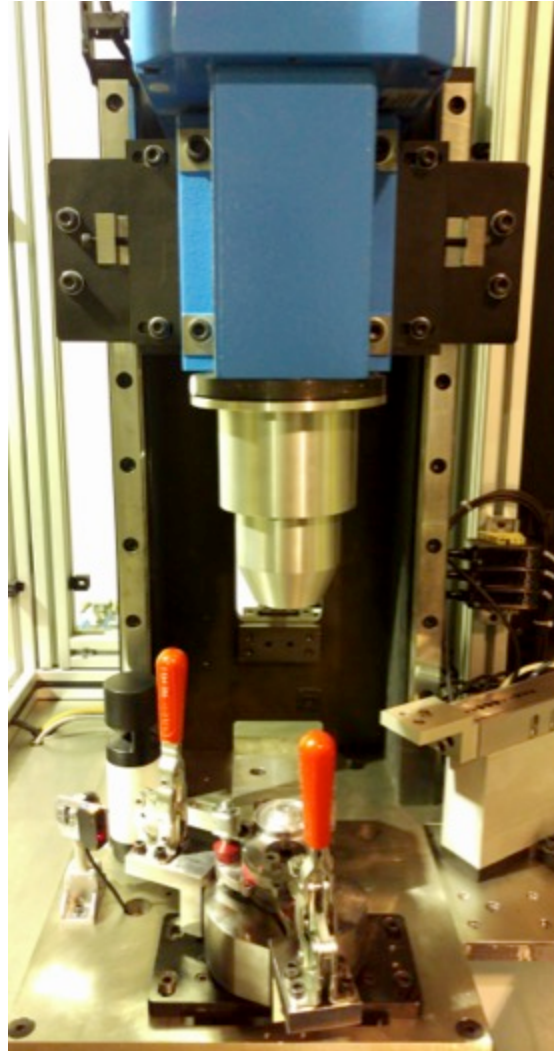


GRUPO ANTOLIN: PVC Cutting Press



PROJECTS

MOTION & ROBOTIC STATIONS

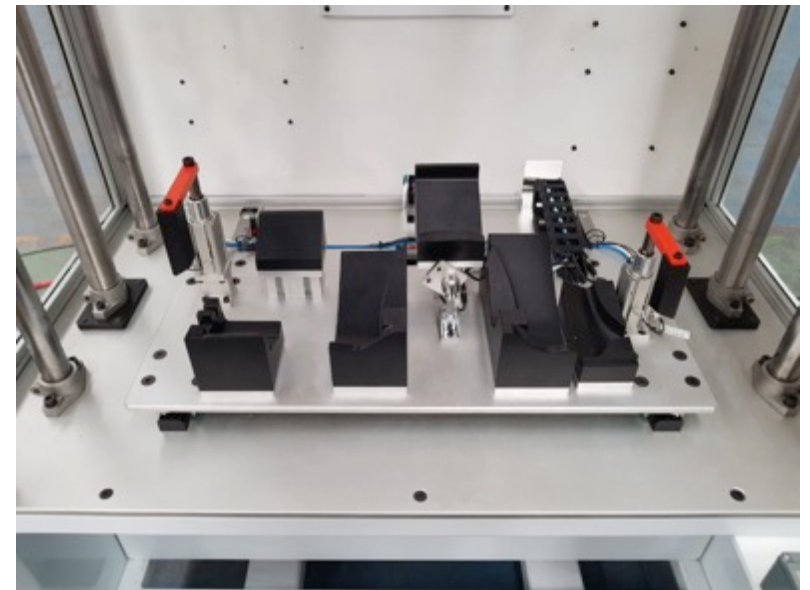


MUBEA: Vertical Milling and Measurement Station



PROJECTS

WELDING STATIONS

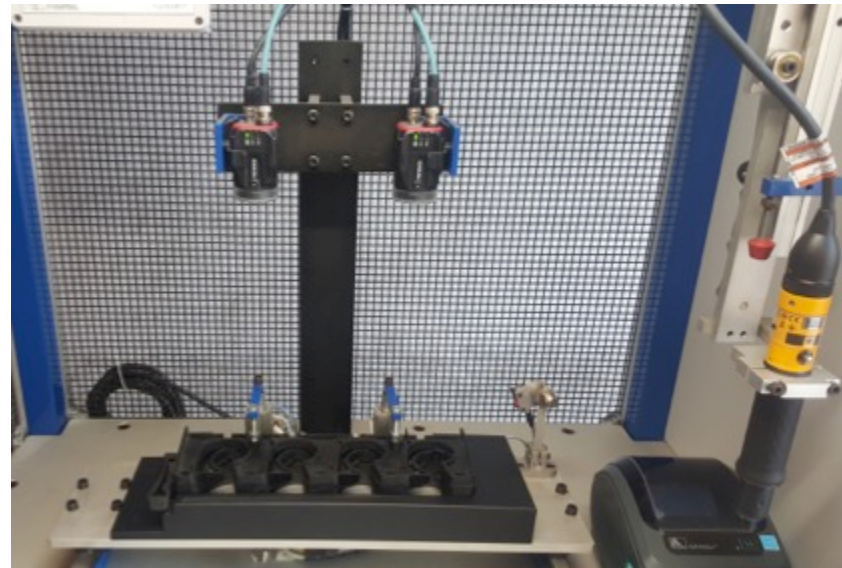


ANTOLIN: CO Cap Hider Ultrasonic Welding Station



PROJECTS

ASSEMBLY AND TORQUE STATIONS



CONMET: Lock Carrier Torque & Vision Station



PROJECTS

ASSEMBLY AND TORQUE STATIONS

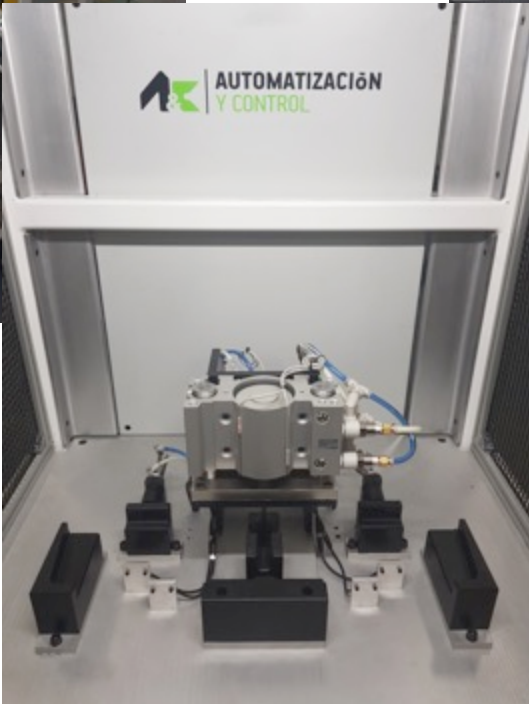


CONMET: Lock Carrier Torque & Vision Station



PROJECTS

ASSEMBLY AND TORQUE STATIONS

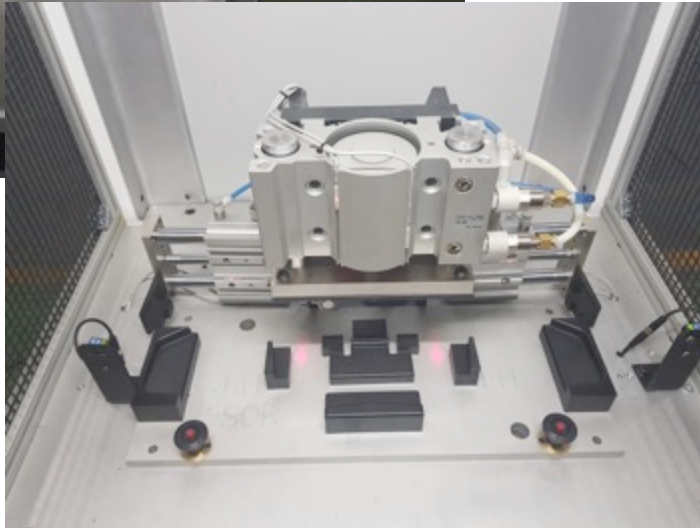


GRUPO ANTOLIN: BMW Sunvisor Assembly Line



PROJECTS

ASSEMBLY AND TORQUE STATIONS

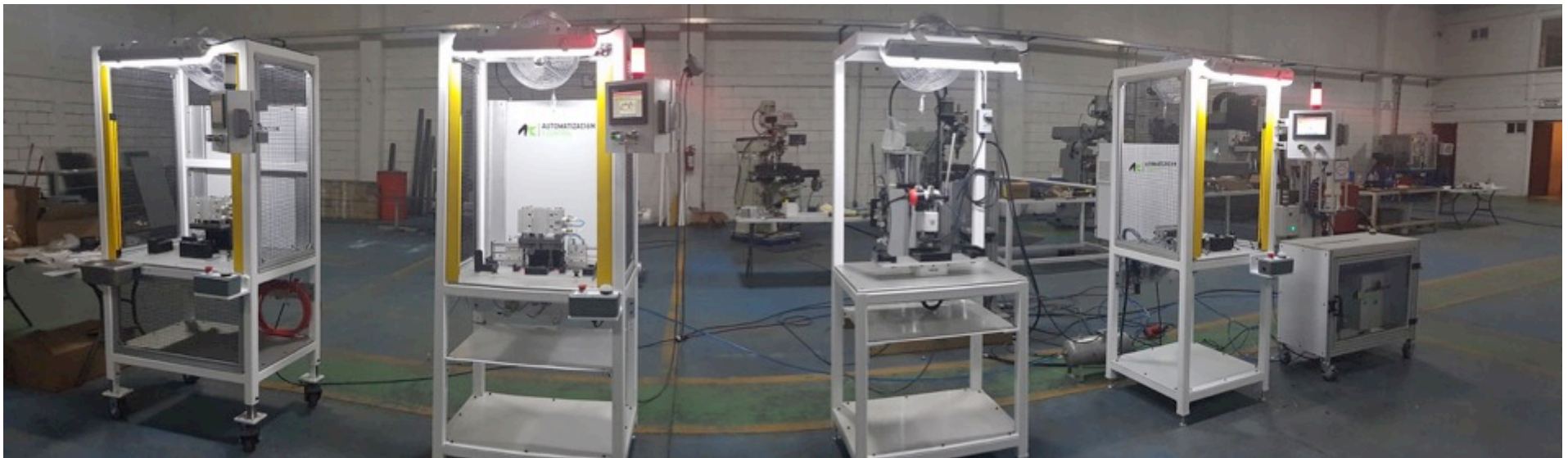


GRUPO ANTOLIN: BMW Sunvisor Assembly Line



PROJECTS

ASSEMBLY AND TORQUE STATIONS



GRUPO ANTOLIN: BMW Sunvisor Assembly Line

ASSEMBLY AND TORQUE STATIONS

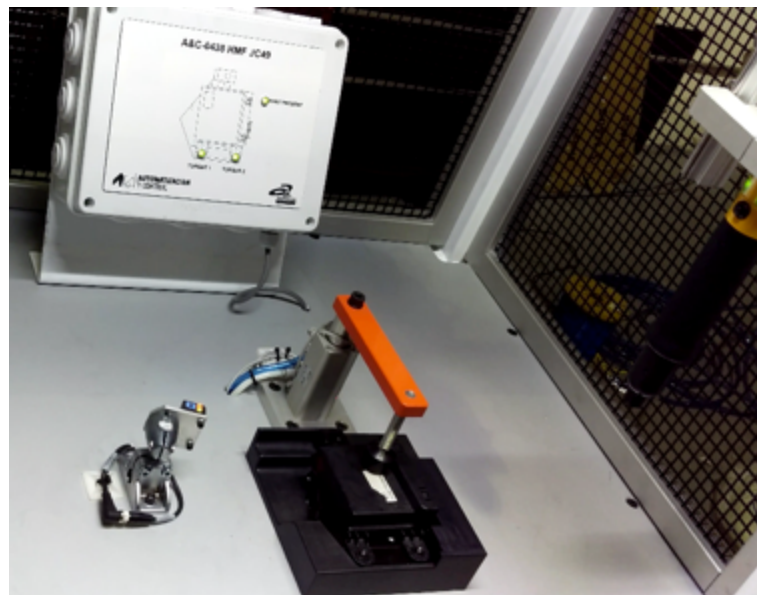


IACNA: OHC& Bezel Torque Stations



PROJECTS

ASSEMBLY AND TORQUE STATIONS



GRUPO ANTOLIN: Assembly Fixture for SGW Module



PROJECTS

ASSEMBLY AND TORQUE STATIONS

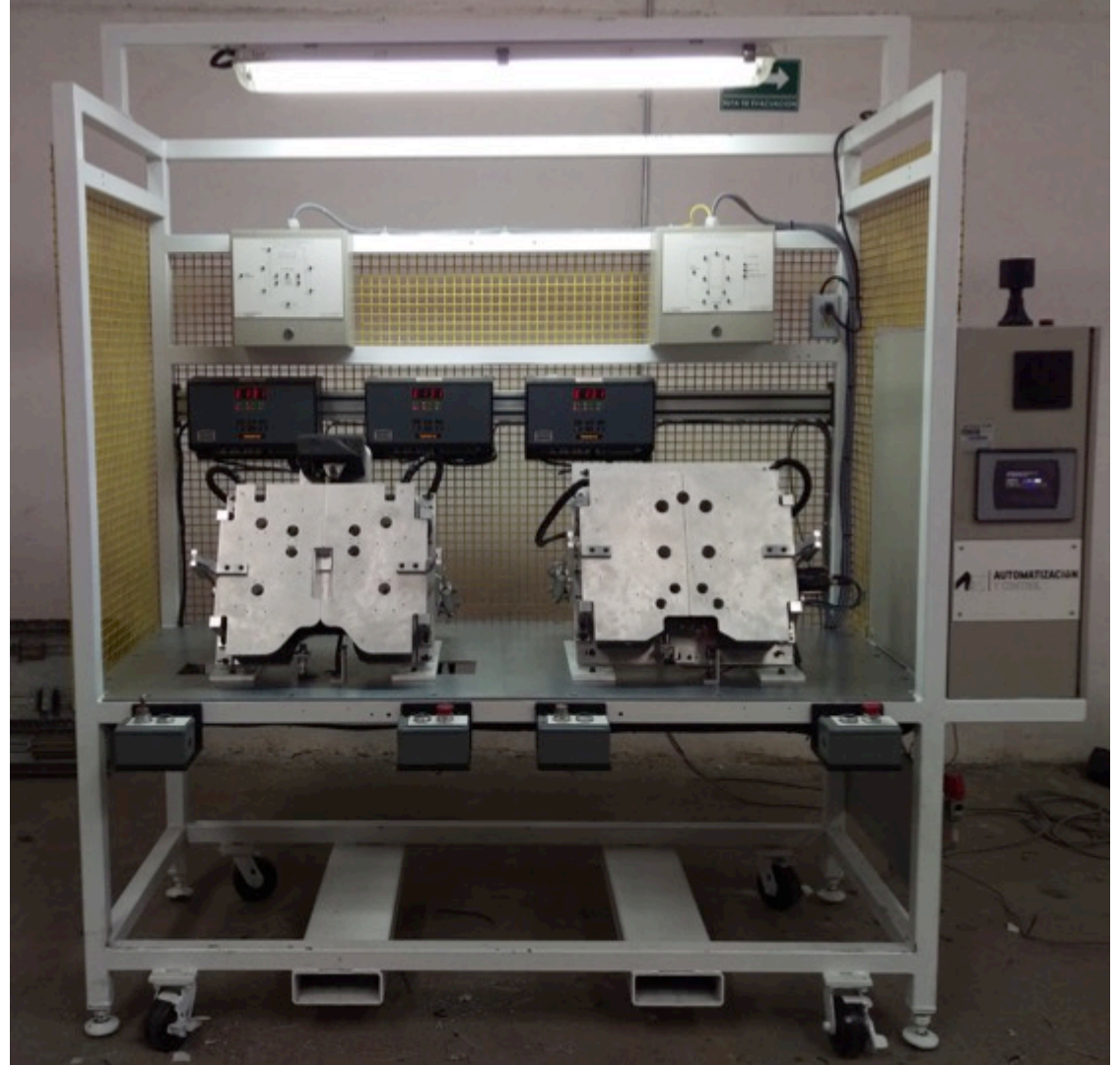
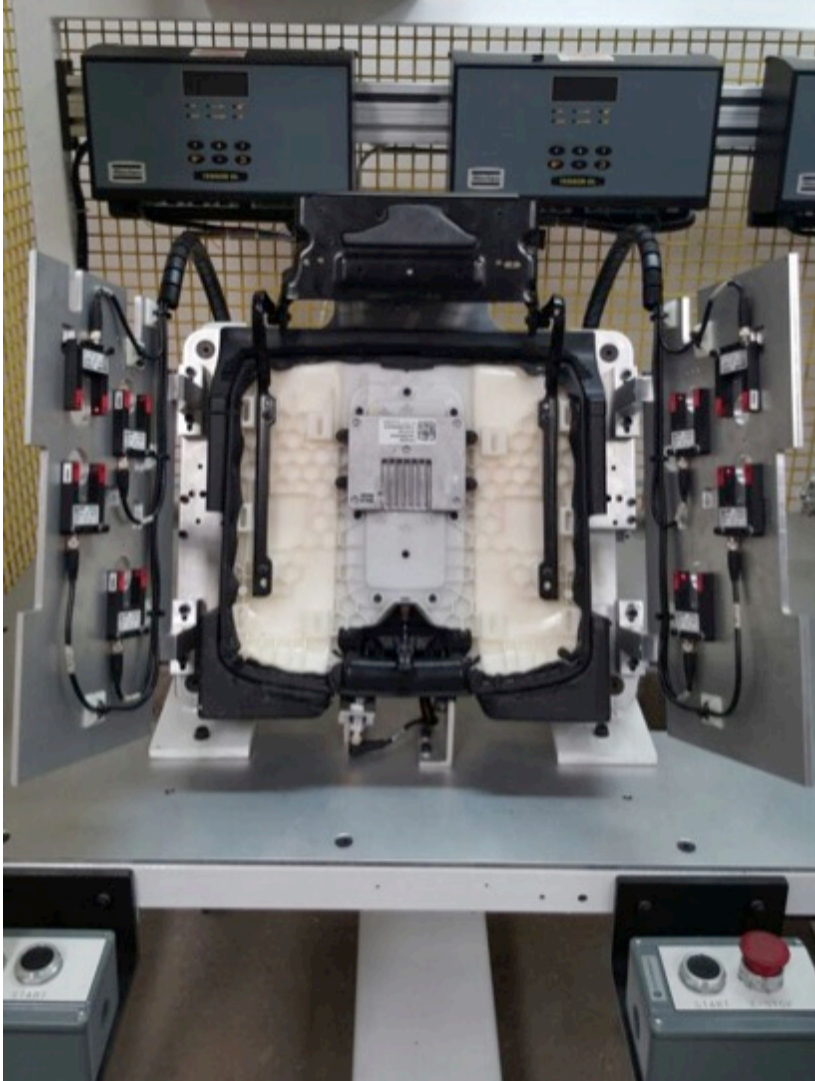


GRUPO ANTOLIN: Assembly Fixture for SGW Module

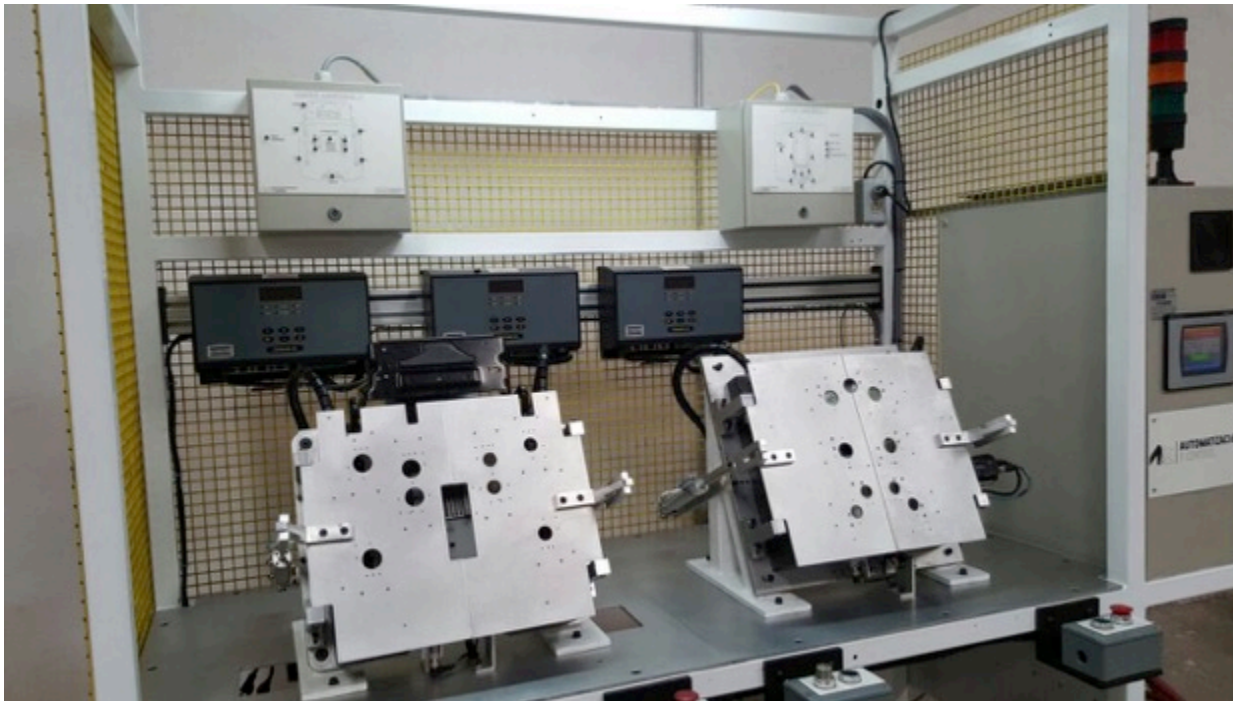


PROJECTS

ASSEMBLY AND TORQUE STATIONS



IACNA: Armrest Torque & Vision Station

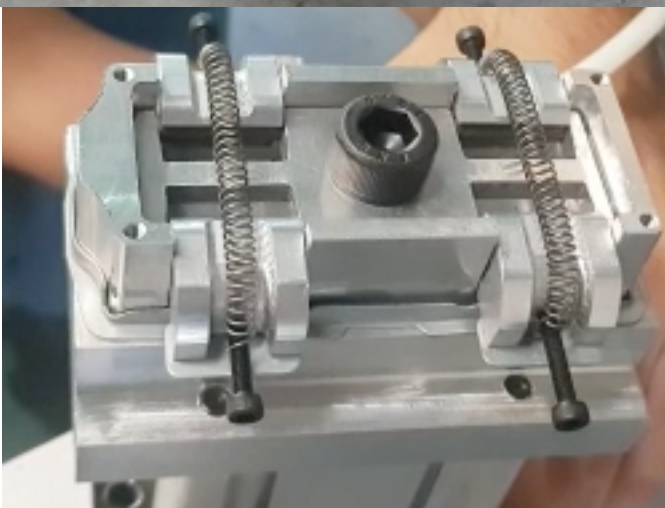
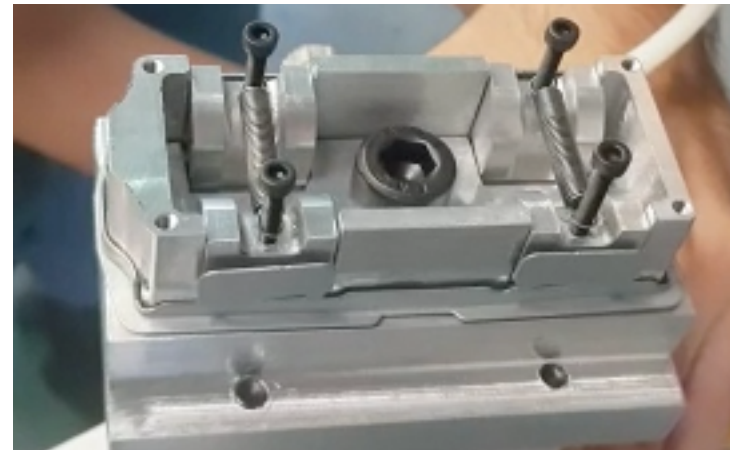


IACNA: Armrest Torque & Vision Station



PROJECTS

ASSEMBLY AND TORQUE STATIONS

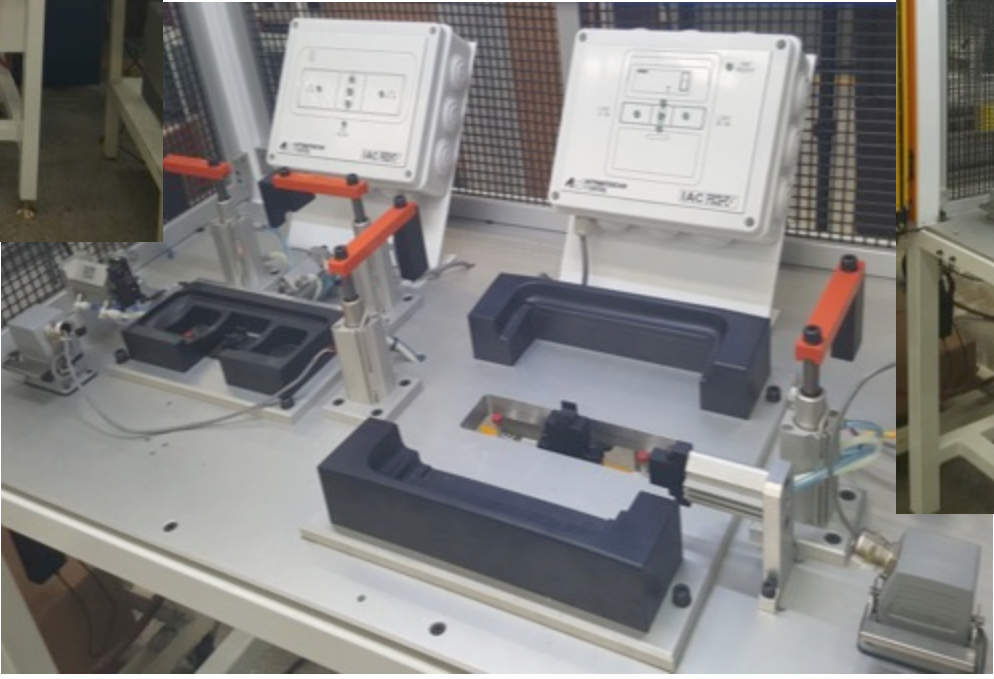


GRUPO ANTOLIN: Crimping Station



PROJECTS

AUTOMATIC ELECTRIC TEST STATION

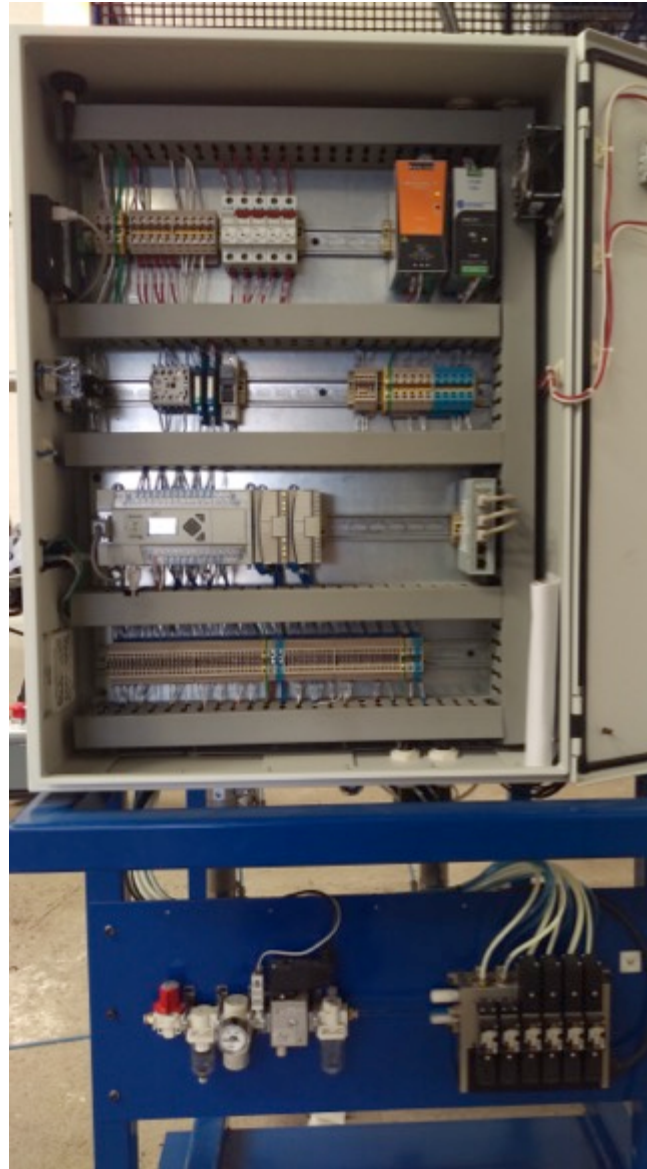


IACNA: OHC Automated Electric Test



PROJECTS

CLIPPING STATIONS

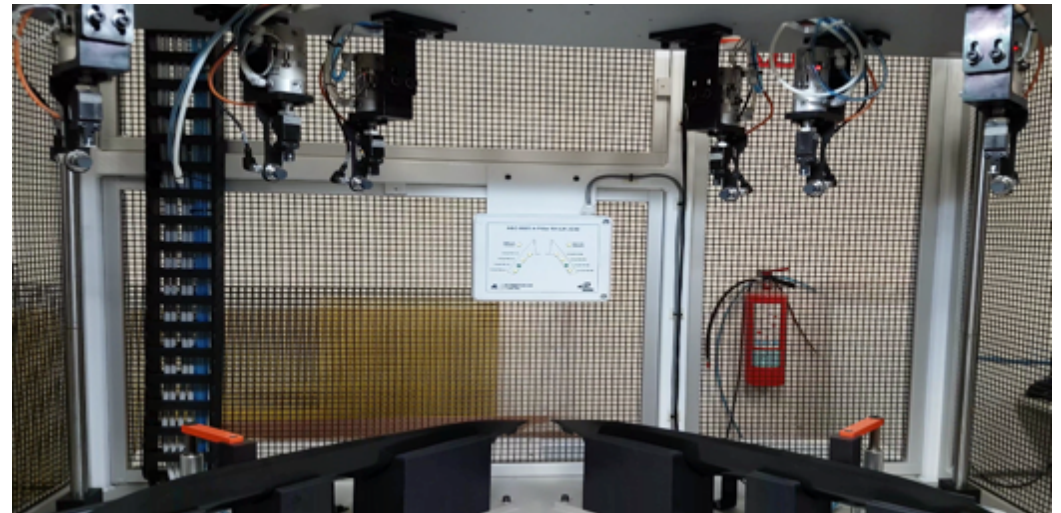
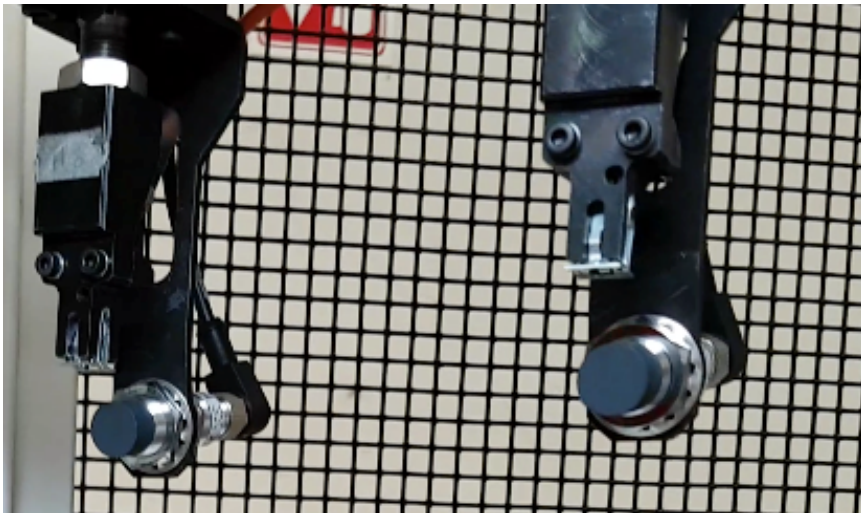
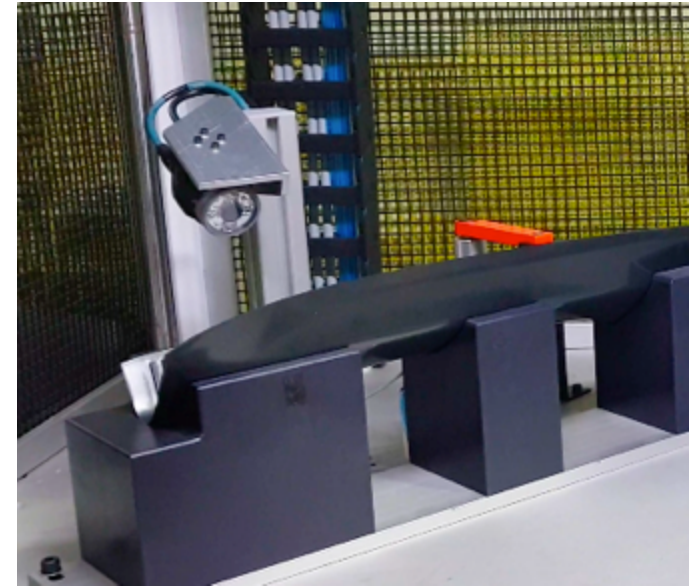
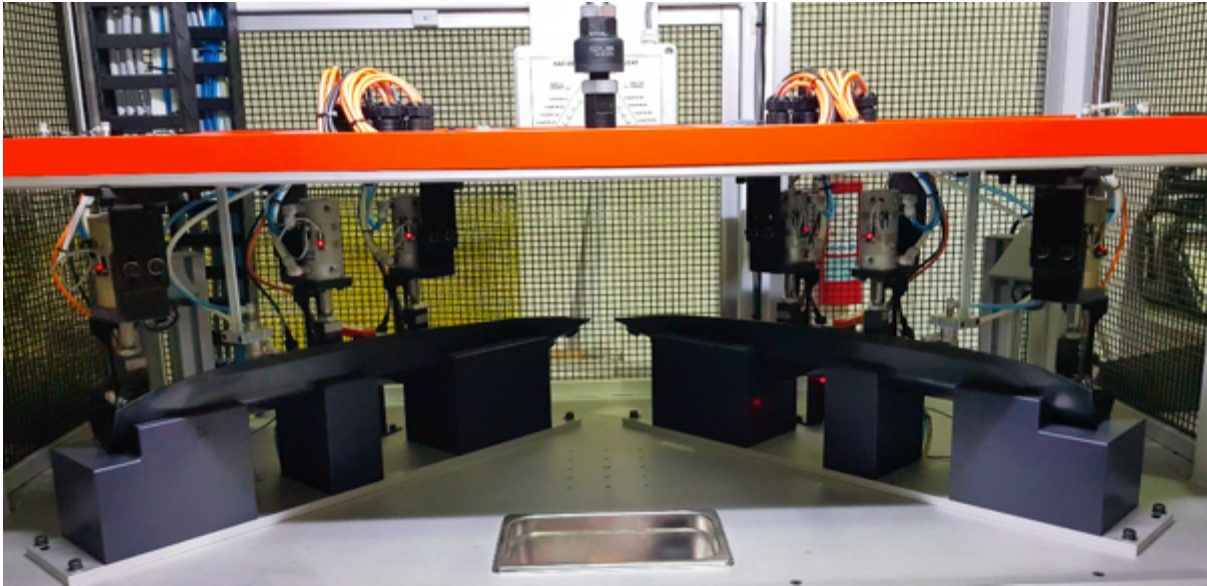


CONMET: A-Pillar Clipping Station



PROJECTS

CLIPPING STATIONS

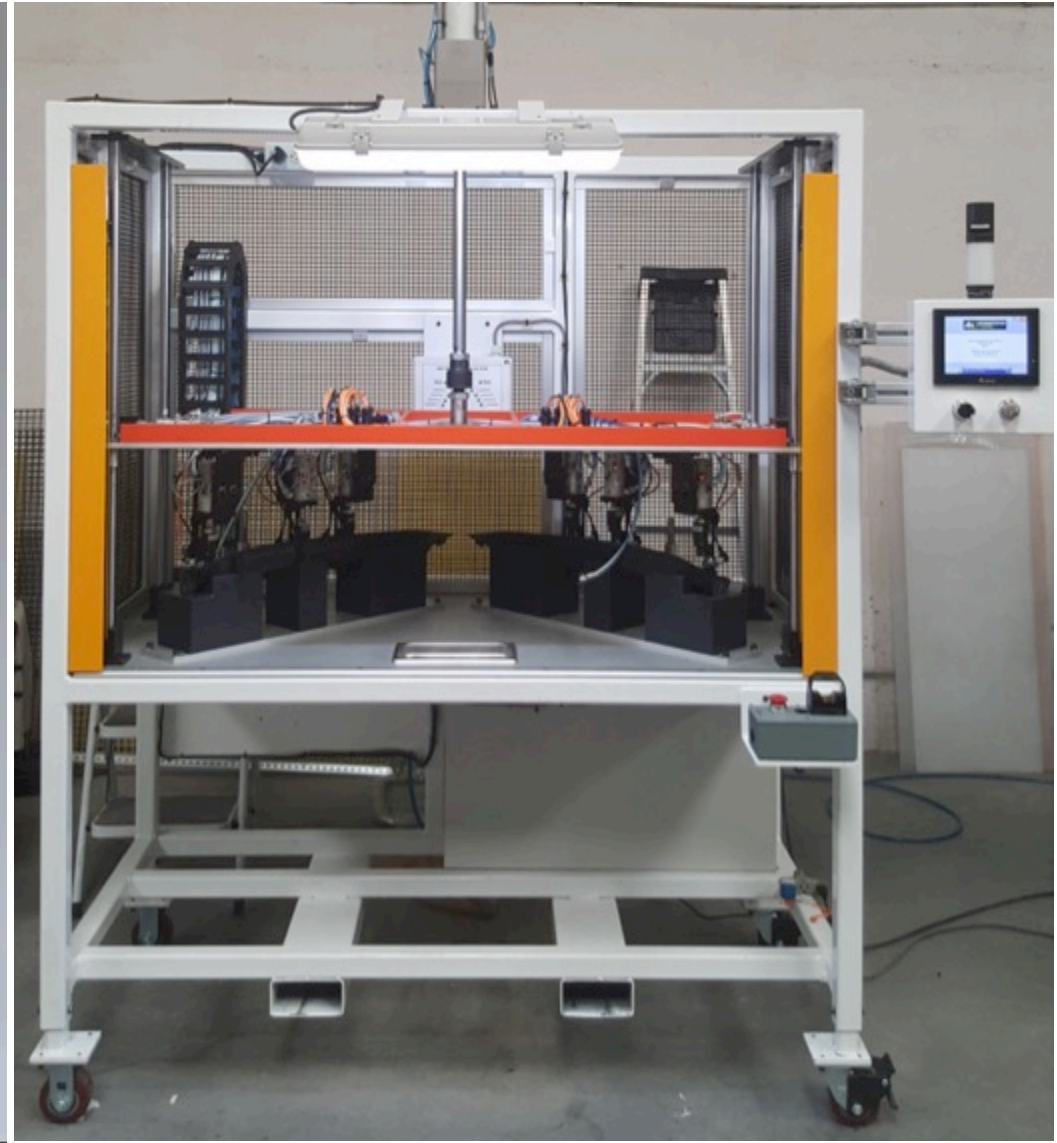
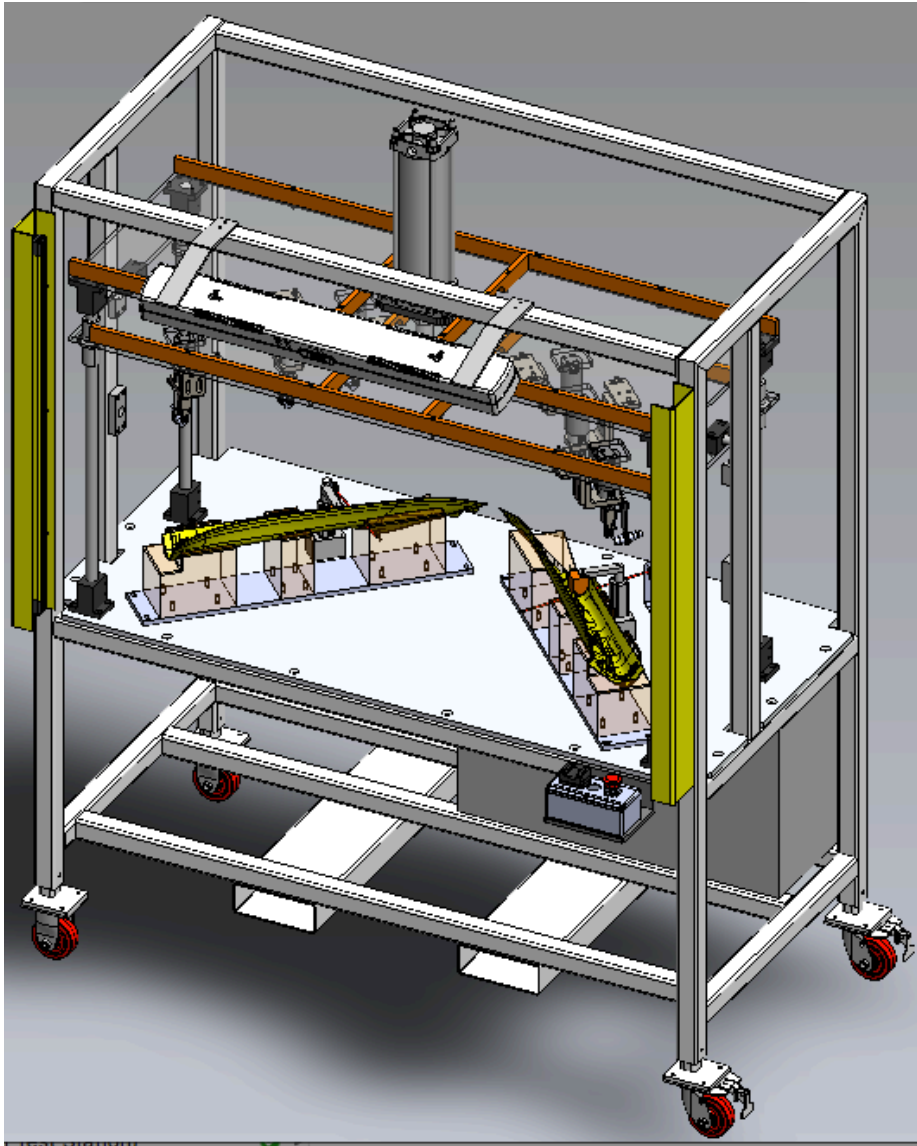


GRUPO ANTOLIN: A-Pillar RH LH JC49



PROJECTS

CLIPPING STATIONS

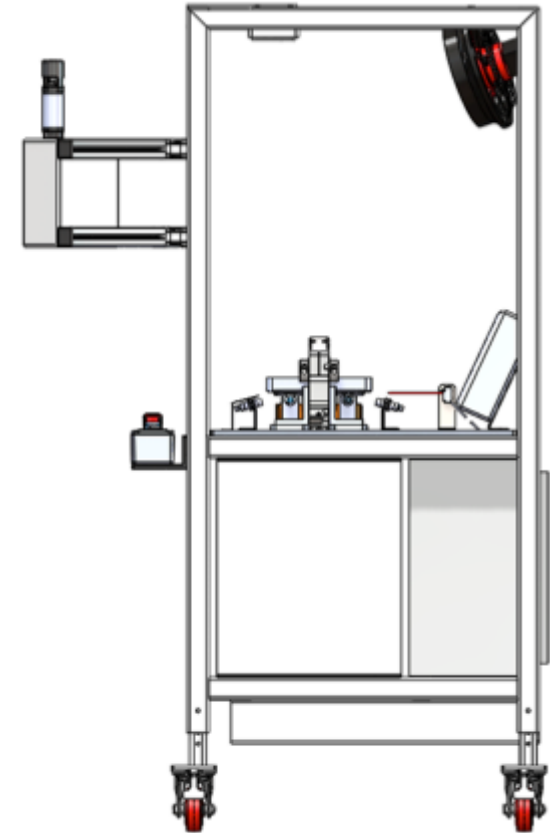
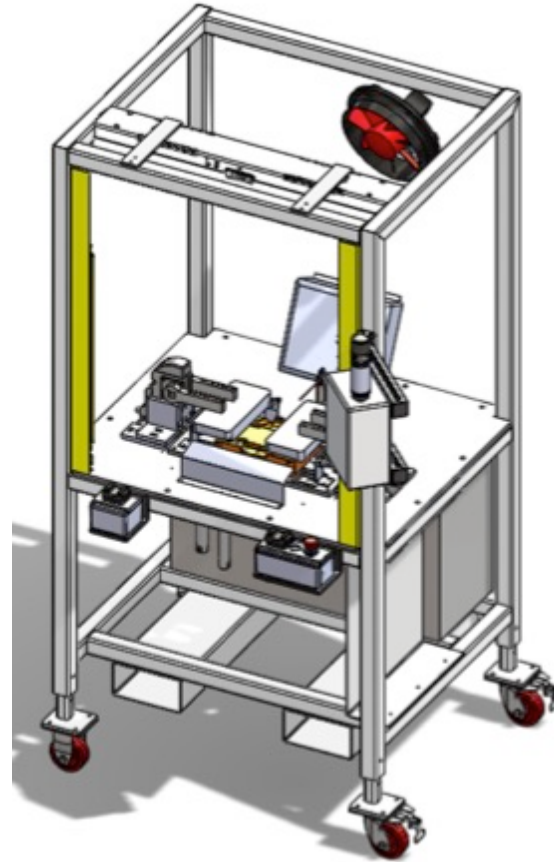
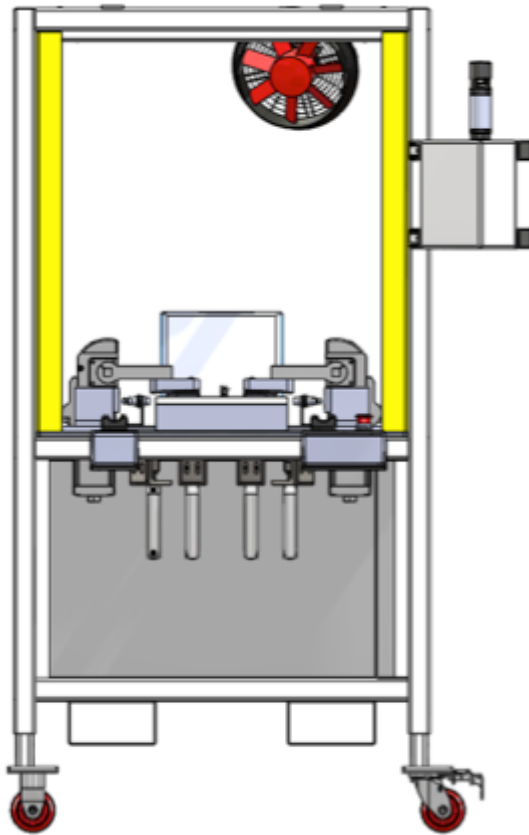


GRUPO ANTOLIN: A-Pillar RH LH JC49



PROJECTS

CLIPPING STATIONS

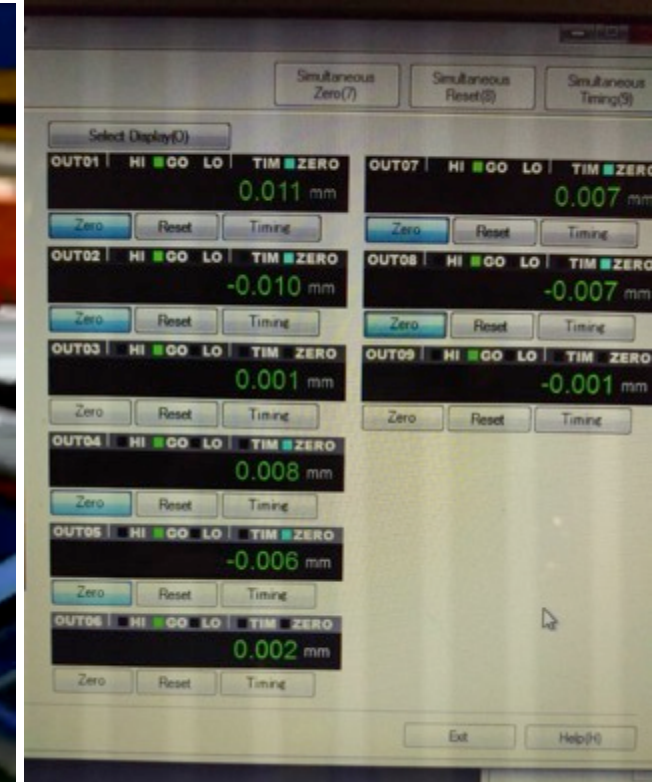


CONMET: PB U60-6192 Trim Vent Clipping Station



PROJECTS

IN-LINE PROCESS STATIONS

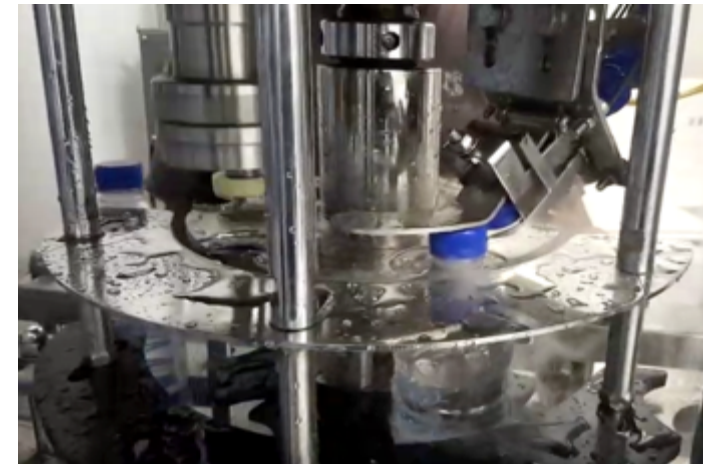


WHIRLPOOL: Liners Thickness Detection



PROJECTS

IN-LINE PROCESS STATIONS



MIND WATER: Bottle Filling Assembly Line



PROJECTS

IN-LINE PROCESS STATIONS



PEMEX: Air Compressor PLC Upgrade



PROJECTS

IN-LINE PROCESS STATIONS



MUBEA: Automated Spraying System



PROJECTS

VIDEO LINKS

https://www.dropbox.com/s/i8ayfk1h2ms2hbq/20171221_183529.mp4?dl=0
<https://www.dropbox.com/s/y4in03ql94b9a4p/CO%20Cpa%20Hider.mp4?dl=0>
<https://www.dropbox.com/s/1p6ysl2lfry1enw/VID-20170930-WA0011.mp4?dl=0>
https://www.dropbox.com/s/tkhfj5d17d5wgzs/20170309_162500.mp4?dl=0
<https://www.dropbox.com/s/0tkfbfwp4zvn00c/VID-20170222-WA0068.mp4?dl=0>
https://www.dropbox.com/s/w9c1rmajea6i45u/20170209_152454.mp4?dl=0
<https://www.dropbox.com/s/pcbe0pv7rxsnpeh/VID-20170518-WA0009.mp4?dl=0>
https://www.dropbox.com/s/gb3hbxdfhhq23rj/20160629_155600.mp4?dl=0
https://www.dropbox.com/s/eabtymcx8e1q4hh/20161006_123119.mp4?dl=0
<https://www.dropbox.com/s/vz7drofgrftlj7b/VID-20161004-WA0012.mp4?dl=0>
<https://www.dropbox.com/s/r4gqn9euyjcf8tf/VID-20161104-WA0038.mp4?dl=0>
<https://www.dropbox.com/s/r78bv8umpq2h51j/VID-20160816-WA0046.mp4?dl=0>
<https://www.dropbox.com/s/jgpb43nhox0p50c/VID-20161117-WA0005.mp4?dl=0>
https://www.dropbox.com/s/b7p1h0dw0xnfbxd/20161104_204914.mp4?dl=0
https://www.dropbox.com/s/32ln1l94psr1ypn/20170510_204004.mp4?dl=0
https://www.dropbox.com/s/yv0sadj02esb0c3/VID_20170123_185651.mp4?dl=0
https://www.dropbox.com/s/pycp1kivsgy504z/20160914_134703.mp4?dl=0
<https://www.dropbox.com/s/lzuii39jqgjwbx/VID-20170920-WA0007.mp4?dl=0>
https://www.dropbox.com/s/8re7evf96hwibh0/20170116_115456.mp4?dl=0
<https://www.dropbox.com/s/vn91vvaq6jo56z2/VID-20170704-WA0054.mp4?dl=0>



Padre Mier #445 Col. Huinala.
Apodaca N.L. MX. CP. 66640
Phone +52 (81)2134-2555

